

BY: HOLLY HEDGE

P&LE STEEL FACTORY  
AND WILSON MIDDLE  
SCHOOL

# P&LE STEEL FACTORY

- This is the rooftop of the main office building of the steel factory. You can barely read the sign now due to damage done by spray paint, and because of it decaying.



# P&LE STEEL FACTORY

- This is the railway you have to cross before entering the set of woods to pass into the factories.



# P&LE STEEL FACTORY

- This photo is on the second floor on the main office building inside one of the rooms where you can see all of the leftover papers.



# P&LE STEEL FACTORY

- This photo is taken from the outside of the second building where a lot of electrical work was done.



# P&LE STEEL FACTORY

- This is the building where all the electrical work was done. This is one of the six sets of stairs.



# P&LE STEEL FACTORY



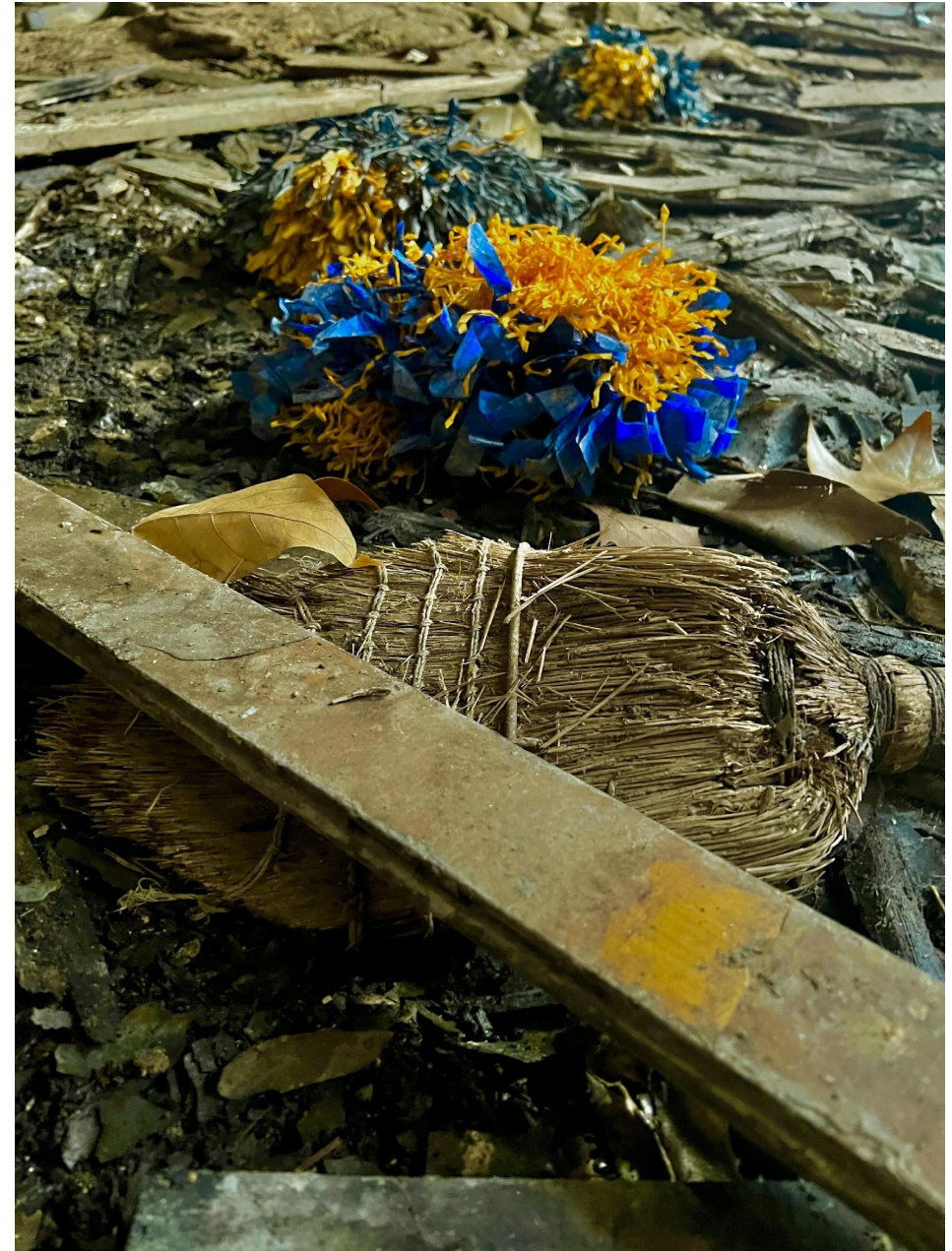
A large, light orange circle with a thick black outline. The text "WILSON MIDDLE SCHOOL" is centered within the circle in a black, sans-serif font.

WILSON MIDDLE  
SCHOOL



# WILSON MIDDLE SCHOOL

- A set of pom poms and a broom in the gymnasium at the Wilson Middle School.



# WILSON MIDDLE SCHOOL

- This is the basement of the middle school. There is about at least a foot of water in the basement. I was standing about a few inches above where the water is.



# WILSON MIDDLE SCHOOL

- This is the grand staircase of the school looking down at the second floor. This was the most decayed section of the school besides the basement.



# WILSON MIDDLE SCHOOL

- This photo isn't of something specific but I felt the need to add it. It is a friend of mine in a chair in the auditorium looking out.



# WILSON MIDDLE SCHOOL

- In this photo, I am sitting in one of the old, run-down chairs in the auditorium on the bottom floor.



# WILSON MIDDLE SCHOOL

